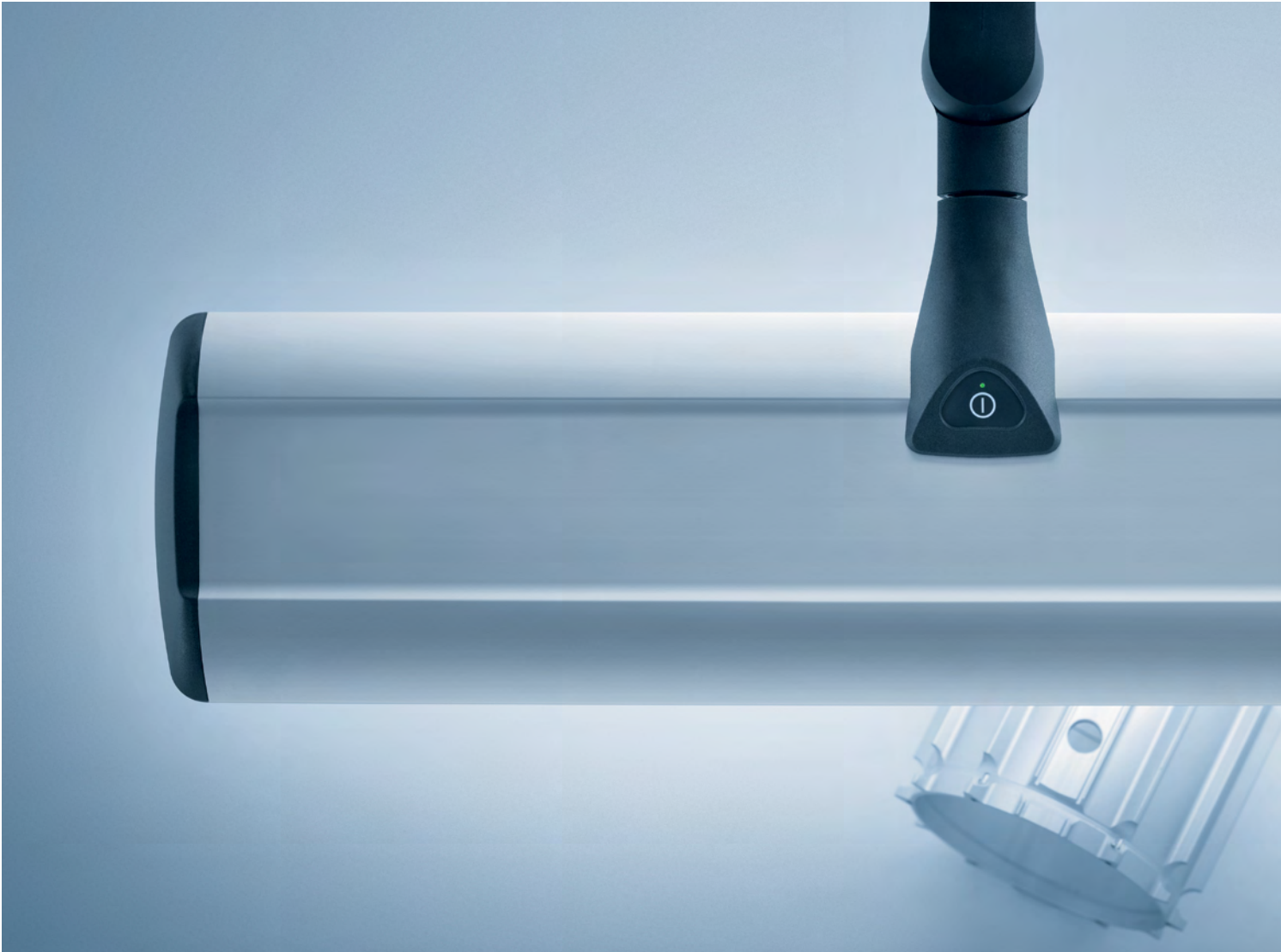


ENG

TANEO | ARM-MOUNTED AND SYSTEM LUMINAIRES

•••  
•••  
•••  
LED





## TANEO AN ALL-ROUND TALENT FOR WORKING WITH OPTIMUM LIGHT.



An uncompromising lighting solution is essential wherever your eyes are put to the test. Whether in manufacture, assembly, quality assurance or analysis, whether in labs, or the electronic, metal or watch industries: TANEO is a truly universal talent.

With luminous power to suit the particular application, high lighting quality and ergonomic handling, it provides optimum working conditions and is incomparable when it comes to adjusting to individual and task-related requirements.

- Maintenance-free LED technology with a service life of up to 50,000 hours and more
- Requirements-oriented output levels for up to 3,600 lx
- 30 % energy saving
- Continuously dimmable down to 10 %, with memory function
- Light Forming and Ray Mixing Technology for area light, free from shadows and reflective glare
- Glare-free thanks to Conical Prismatic Screen (CDP) or white opal screen
- Flicker-free light with no IR or UV content
- Good contrast sensitivity and very good color recognition thanks to premium LEDs
- Uniquely flexible and balanced arm with an enormous radius of action or intelligent connections for space-saving under-cabinet assembly
- Closed construction for protection of the user and the integrated technology
- Robust aluminum and fiber glass-reinforced high-performance plastic
- Premium workmanship in accordance with Waldmann's quality standards



1 CDP screen: maximum luminous power.

2 White opal screens: maximum homogeneity.

3 Three sizes: Requirement-oriented output levels.



#### Efficient and requirements-oriented output levels

With three available output levels, the Taneo can properly fulfill every illuminance requirement. The advantage: Both in the procurement and in the operation, the costs are based on what is really needed.

But no matter what the illuminance, the Taneo is always particularly energy-efficient. It consumes 30 % less energy in comparison to conventional task luminaires with the same luminous power. Specifically, this means: With an illuminance of 1,400 lx, the consumption is just 15 W; for a powerful 2,600 lx or 3,600 lx, it is just 31 W or 47 W, including power supply.

#### LED-based lighting technology with high lighting quality

Taneo provides wide-range, homogeneous, glare-free and shadow-free lighting. This is thanks to innovative technologies such as Light Forming and Ray Mixing. The CDP or white opal screen also contribute to completely glare-free lighting. At the same time, the Taneo light is completely glare-free and particularly powerful. All this considerably relieves eye strain.

Additional positive characteristics of Taneo improve the results at the workplace. For example, the color temperatures used (4,000 or 5,000 K) make contrasts highly visible. In addition, the high color reproduction index of approx. 85 (variant with CDP screen) or 90 (variant with white opal screen) generates an extremely good presentation of colors. And because the light quantity is dimmable down to 10 %, the Taneo very easily adjusts itself to individual needs.

## TANEO ARM-MOUNTED LUMINAIRE VARIABLE AND CONVENIENT.



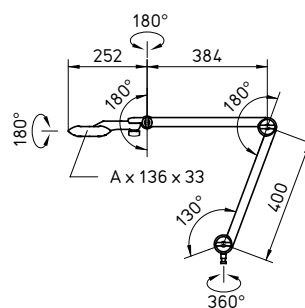
The uniquely flexible and balanced arm of TANEO can be effortlessly adjusted to any position. This is held without taking any further action, but can be locked if required.

The arm also has a particularly large radius of action. And the luminaire head can also be varied in any way thanks to the highly flexible 3D head joint.

# TECHNICAL DATA



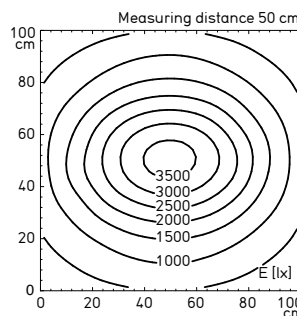
efficient *light*



Dimension A: 15 W = 218 mm, 31 W = 398 mm, 47 W = 577 mm

## Features at a glance

- 12, 24 or 36 x LED
- Power consumption 15, 31 or 47 W
- Color temperature neutral white 4,000 K or 5,000 K
- Glare-free thanks to Conical Prismatic Screen (CDP) or white opal screen
- Housing made of colorless anodized aluminum and black plastic, screen made of PMMA (CDP) or PC (white opal screen)
- Spring-balanced arm with 3D head joint
- Membrane switch integrated in the luminaire head for on/off and dimming
- System of protection IP20, class of protection III (luminaire) and II (power supply)
- Wall power supply (15 W) or table power supply (31 and 47 W), 100 – 240 V, 50/60 Hz, 3 m mains lead
- Various fastenings as accessories (see catalog)



Illuminance based on the example of 47 W with CDP screen

| CONSUMPTION | SCREEN         | COLOR TEMPERATURE | $E_m/E_{max}^*$           | MODEL     | ORDER NUMBER             |
|-------------|----------------|-------------------|---------------------------|-----------|--------------------------|
| 15 W        | Conical prisms | 4000 K            | 479/1394 lx <sup>1</sup>  | STZL 12 R | 112 576 000 - 005 441 67 |
| 15 W        | Conical prisms | 5000 K            | 479/1394 lx <sup>1</sup>  | STZL 12 R | 112 576 000 - 005 397 57 |
| 15 W        | White opal     | 4000 K            | 366/836 lx <sup>1</sup>   | STZL 12 R | 112 576 000 - 005 595 52 |
| 15 W        | White opal     | 5000 K            | 366/836 lx <sup>1</sup>   | STZL 12 R | 112 576 000 - 005 595 71 |
| 31 W        | Conical prisms | 4000 K            | 958/2603 lx <sup>1</sup>  | STZL 24 R | 112 577 000 - 005 441 79 |
| 31 W        | Conical prisms | 5000 K            | 958/2603 lx <sup>1</sup>  | STZL 24 R | 112 577 000 - 005 397 74 |
| 31 W        | White opal     | 4000 K            | 702/1514 lx <sup>1</sup>  | STZL 24 R | 112 577 000 - 005 595 74 |
| 31 W        | White opal     | 5000 K            | 702/1514 lx <sup>1</sup>  | STZL 24 R | 112 577 000 - 005 595 77 |
| 47 W        | Conical prisms | 4000 K            | 1425/3596 lx <sup>1</sup> | STZL 36 R | 112 578 000 - 005 441 82 |
| 47 W        | Conical prisms | 5000 K            | 1425/3596 lx <sup>1</sup> | STZL 36 R | 112 578 000 - 005 397 77 |
| 47 W        | White opal     | 4000 K            | 1016/2114 lx <sup>1</sup> | STZL 36 R | 112 578 000 - 005 595 80 |
| 47 W        | White opal     | 5000 K            | 1016/2114 lx <sup>1</sup> | STZL 36 R | 112 578 000 - 005 595 83 |

\*  $E_m$  = medium illuminance;  $E_{max}$  = maximum illuminance; <sup>1</sup> Measuring range 100 cm x 100 cm/Measuring distance 50 cm

## TANEO SYSTEM LUMINAIRE SPACE-SAVING AND VERSATILE.



The TANEO system luminaire offers particularly space-saving and unobtrusive assembly options, e.g. under shelves.

You can choose between a design that is attached on both sides or a fold-out design. The latter is ideally used as a pair of luminaires.



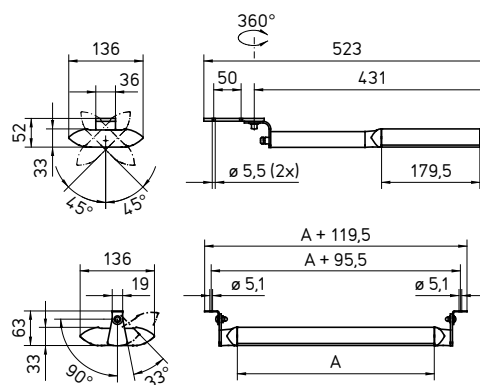
Its practical arm enables it to be horizontally swiveled. This innovative connection enables e.g. a lateral illumination and thus shadow-free working in any task position.

The luminaire head can be rotated in both variants.

## TECHNICAL DATA



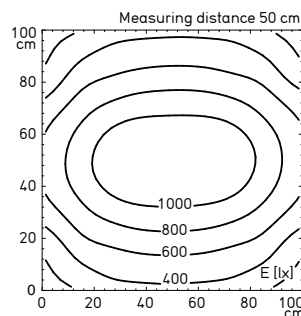
efficient *light*



Dimension A: 31 W = 359.5 mm, 47 W = 538.5 mm

### Features at a glance

- 12, 24 or 36 x LED
- Power consumption 15 W (swivel arm), 31 or 47 W (fixed connection)
- Color temperature neutral white 4,000 K or 5,000 K
- Glare-free thanks to Conical Prismatic Screen (CDP) or white opal screen
- Housing made of colorless anodized aluminum and black plastic, screen made of PMMA (CDP) or PC (white opal screen)
- Swivel arm (15 W) or fixed connection (31 or 47 W), with head joint that can be rotated
- Membrane switch integrated in the luminaire head for on/off and dimming
- System of protection IP20, class of protection III (luminaire) and II (power supply)
- Wall power supply (15 W) or table power supply (31 and 47 W), 100 – 240 V, 50/60 Hz, 4 m mains lead



Illuminance based on the example of two 15 W luminaires with CDP screen that are swiveled at an angle of 90° (Distance between the two luminaire heads approx. 90 cm)

| CONSUMPTION | CONNECTION       | SCREEN         | COLOR TEMPERATURE | $E_m/E_{max}$ *           | MODEL      | ORDER NUMBER             |
|-------------|------------------|----------------|-------------------|---------------------------|------------|--------------------------|
| 15 W        | Swivel arm       | Conical prisms | 4000 K            | 479/1394 lx <sup>1</sup>  | SARKL 12 R | 112 991 000 - 005 525 84 |
| 15 W        | Swivel arm       | Conical prisms | 5000 K            | 479/1394 lx <sup>1</sup>  | SARKL 12 R | 112 991 000 - 005 592 47 |
| 15 W        | Swivel arm       | White opal     | 4000 K            | 366/836 lx <sup>1</sup>   | SARKL 12 R | 112 991 000 - 005 592 50 |
| 15 W        | Swivel arm       | White opal     | 5000 K            | 366/836 lx <sup>1</sup>   | SARKL 12 R | 112 991 000 - 005 592 53 |
| 31 W        | Fixed connection | Conical prisms | 4000 K            | 958/2603 lx <sup>1</sup>  | SARL 24 R  | 112 992 000 - 005 525 87 |
| 31 W        | Fixed connection | Conical prisms | 5000 K            | 958/2603 lx <sup>1</sup>  | SARL 24 R  | 112 992 000 - 005 593 08 |
| 31 W        | Fixed connection | White opal     | 4000 K            | 702/1514 lx <sup>1</sup>  | SARL 24 R  | 112 992 000 - 005 593 11 |
| 31 W        | Fixed connection | White opal     | 5000 K            | 702/1514 lx <sup>1</sup>  | SARL 24 R  | 112 992 000 - 005 593 15 |
| 47 W        | Fixed connection | Conical prisms | 4000 K            | 1425/3596 lx <sup>1</sup> | SARL 36 R  | 112 993 000 - 005 525 93 |
| 47 W        | Fixed connection | Conical prisms | 5000 K            | 1425/3596 lx <sup>1</sup> | SARL 36 R  | 112 993 000 - 005 593 18 |
| 47 W        | Fixed connection | White opal     | 4000 K            | 1016/2114 lx <sup>1</sup> | SARL 36 R  | 112 993 000 - 005 593 21 |
| 47 W        | Fixed connection | White opal     | 5000 K            | 1016/2114 lx <sup>1</sup> | SARL 36 R  | 112 993 000 - 005 594 45 |

\*  $E_m$  = medium illuminance;  $E_{max}$  = maximum illuminance; <sup>1</sup> Measuring range 100 cm x 100 cm/Measuring distance 50 cm;

**HEADQUARTERS GERMANY**

Herbert Waldmann GmbH & Co. KG  
Postfach 50 62  
78057 VILLINGEN-SCHWENNINGEN  
GERMANY  
Telephone +49 7720 601-0  
Telephone +49 7720 601-100 (Sales)  
Fax +49 7720 601-290  
www.waldmann.com  
sales.germany@waldmann.com

**FRANCE**

Waldmann Eclairage S.A.S.  
Zone Industrielle  
Rue de l'Embranchement  
67116 REICHSTETT  
FRANCE  
Telephone +33 3 88 20 95 88  
Fax +33 3 88 20 95 68  
www.waldmann.com  
info-fr@waldmann.com

**ITALY**

Waldmann Illuminotecnica S.r.l.  
Via della Pace, 18 A  
20098 SAN GIULIANO MILANESE (MI)  
ITALY  
Telephone +39 02 98 24 90 24  
Fax +39 02 98 24 63 78  
www.waldmann.com  
info-it@waldmann.com

**THE NETHERLANDS**

Waldmann B.V.  
Lingewei 19  
4004 LK TIEL  
THE NETHERLANDS  
Telephone +31 344 631019  
Fax +31 344 627856  
www.waldmann.com  
info-nl@waldmann.com

**AUSTRIA**

Waldmann Lichttechnik Ges.m.b.H.  
Gewerbepark Wagram 7  
4061 PASCHING/LINZ  
AUSTRIA  
Telephone +43 7229 67400  
Fax +43 7229 67444  
www.waldmann.com  
info-at@waldmann.com

**SWEDEN**

Waldmann Ljusteknik AB  
Skebokvarnsvägen 370  
124 50 BANDHAGEN  
SWEDEN  
Telephone +46 8 990 350  
Fax +46 8 991 609  
www.waldmann.com  
info-se@waldmann.com

**SWITZERLAND**

Waldmann Lichttechnik GmbH  
Benkenstrasse 57  
5024 KÜTTIGEN  
SWITZERLAND  
Telephone +41 62 839 1212  
Fax +41 62 839 1299  
www.waldmann.com  
info-ch@waldmann.com

**UNITED KINGDOM**

Waldmann Lighting Ltd.  
7 Millfield House  
Croxley Green Business Park  
WATFORD WD18 8YX  
UNITED KINGDOM  
Telephone +44 1923 800030  
Fax +44 1923 800016  
www.waldmann.com  
info-uk@waldmann.com

**USA**

Waldmann Lighting Company  
9, W. Century Drive  
WHEELING, ILLINOIS 60090  
USA  
Telephone +1 847 520 1060  
Fax +1 847 520 1730  
www.waldmannlighting.com  
waldmann@waldmannlighting.com

**CHINA**

Waldmann Lighting (Shanghai) Co., Ltd.  
Part A11a, No. Five Normative Workshop  
199 Changjian Road, Baoshan  
SHANGHAI, P.R.C. 200949  
CHINA  
Telephone +86 21 5169 1799  
Fax +86 21 3385 0032  
www.waldmann.com  
info@waldmann.com.cn

**SINGAPORE**

Waldmann Lighting Singapore Pte. Ltd.  
22 Cross Street, #02-50/51  
South Bridge Court  
SINGAPORE 048421  
SINGAPORE  
Telephone +65 6275 8300  
Fax +65 6275 8377  
www.waldmann.com  
sales-sg@waldmann.com

**INDIA**

Waldmann Lighting Pvt. Ltd.  
Plot No. 52  
Udyog Vihar  
Phase-VI, Sector-37  
GURGAON-122001, Haryana  
INDIA  
Telephone +91 124 412 1600  
Fax +91 124 412 1611  
www.waldmann.com  
sales-in@waldmann.com