

## TABLE CLAMP

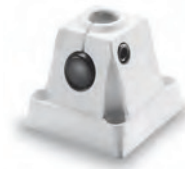
### TECHNICAL DATA



MATERIAL	polyamide steel
FINISH	coated
ADJUSTABLE RANGE	0-70 mm
WEIGHT (NET)	0,350 kg
FOR PIN Ø	16 mm-W with removal guard
ORDER NUMBER	D14.228.000 - black

## UNIVERSAL MOUNT

### TECHNICAL DATA



MATERIAL	polyamide GF
DIMENSIONS	60 x 60 x 60 mm
WEIGHT (NET)	approx. 0,09 kg
FOR PIN Ø	16 mm-W with removal guard
ORDER NUMBER	D13.430.000 - pure white

## RAIL MOUNT

### TECHNICAL DATA



MATERIAL	aluminium
FINISH	natural-anodised
EQUIPMENT RAIL	25-35 x 8-10 mm
WEIGHT (NET)	approx. 0,16 kg
FOR PIN Ø	16 mm-W with removal guard
ORDER NUMBER	D13.269.000



SUITABLE FOR LAMP	D <sup>med</sup> ® <b>oculux</b> Gyn
ORDER NUMBER	D15.165.000

## WALL MOUNT

### TECHNICAL DATA



MATERIAL	polyamide GF
WEIGHT (NET)	approx. 0,14 kg
FOR PIN Ø	16 mm-W with removal guard with cable outlet
ORDER NUMBER	D13.231.000 - pure white

## ROLLER STAND R TELESCOP

### TECHNICAL DATA



MATERIAL	stainless steel
FINISH	– Tube: polished – Foot: plastic with loaded base – Casters: twin plastic casters, with 2 brakes
DIMENSIONS	0,8–1,4 m
WEIGHT (NET)	6,25 kg
FOR PIN Ø	16 mm-W with removal guard with cable suspension device
ORDER NUMBER	D14.911.000

## ROLLER STAND RL

### TECHNICAL DATA



MATERIAL	stainless steel
FINISH	– Tube: polished – Foot: plastic with loaded base – Casters: twin plastic casters, with 2 brakes
DIMENSIONS	0,8 m
WEIGHT (NET)	4,7 kg
FOR PIN Ø	16 mm-W with removal guard with cable suspension device
ORDER NUMBER	D14.022.000