

Maggylamp LED-3 Machine Light Spec Sheet



Fitted with
Work equipment
Connected load

3 x Light-emitting diode
Integrated LED driver
100 -240V 50/60Hz (ML310S-LED, ML310-LED, ML310L-LED-240) or 24VAC/DC (ML310S-LED-24, ML310-LED-24, ML310L-LED)

Power consumption
Light output
System of protection
Class of protection
Operation
Lamp body
Lamp cover
Arm section

approx. 6 Watt
620 lumen
IP 65
II
switch on head
aluminium
glass screen
articulated aluminium tube arms; anodised grey, steel gooseneck; silicon sleeved (flexible model)

Base housing

plastic-black(240V), steel-grey(24V)
approx. 1.5-2.5kg

Weight

Power lead

approx. 1.8; mains plug AUS/NZ(240V series only)

Fastening

screw down flange, table clamp (accessory), wall bracket (accessory), magnet (accessory)

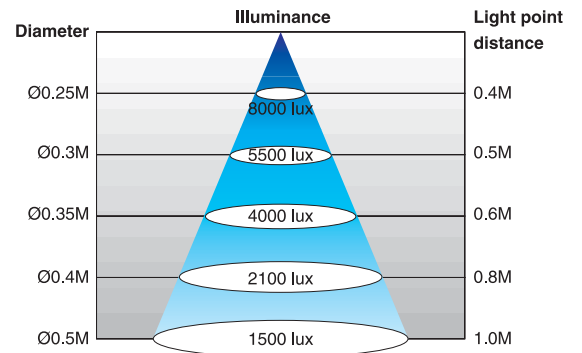
Accessory

Special features

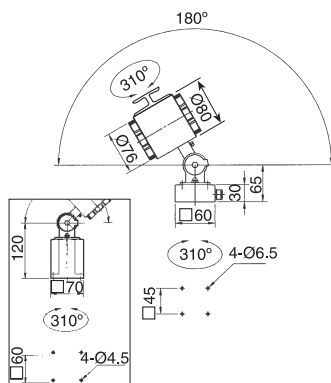
-
15° beam angle, 6000K colour temperature

Power LED

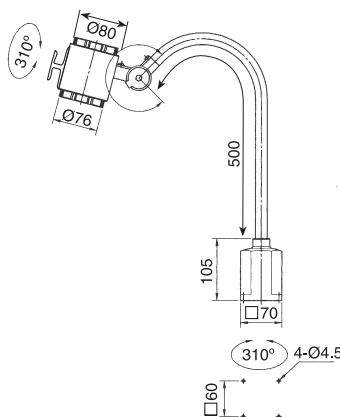
1Wx3 15°



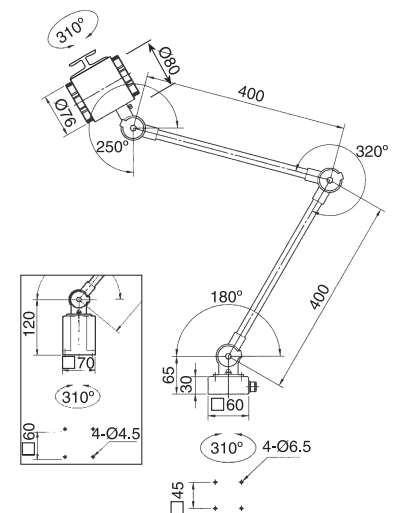
DIMENSIONS (Millimetres)



ML310S-LED-24
Inset ML310S-LED



ML310-LED
ML310-LED-24



ML310L-LED
Inset ML310L-LED-240

Data may vary due to component tolerances.
E & OE